

# EBS-230 PicAS Large-Character Inkjet Printer



## low-cost . compact

The EBS-230 PicAS series can be used to print onto virtually any surface, porous or non-porous, pale or dark coloured.

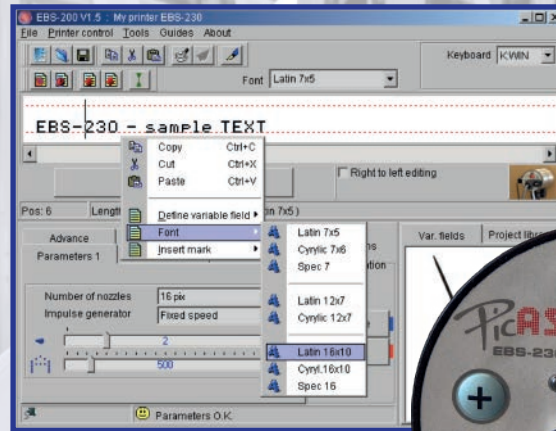
Electromagnetic printhead technology allows the use of very fast-drying inks without the risk of the printhead clogging making the EBS-230 ideal for printing onto metals, plastics and other non-porous surfaces.

For simple print requirements, messages can be preloaded into the printer and selected using the keypad on the printhead itself. Where more control is needed, the touch screen keypad allows full message editing and system control.



## self contained

For simple printing applications, the EBS PC-based message editor can be used to create up to 30 print messages and store the messages on the printer memory. The keypad on the printhead can then be used to select the required message. Messages can contain fixed text, date, time, offset date, logos and sequential numbers.



## T200 touch screen

For printing requirements where the print message contents are regularly updated e.g. batch code or expiry date entry, the optional T200 touch screen terminal offers a practical solution.

Print message content and print settings can be easily and quickly changed from the T200 terminal which can be shared between multiple EBS-230 printers.

### Specification

<b>Print matrix:</b>	7 and 16 dot models	<b>Ink container:</b>	1-litre bottle
<b>Nozzle size:</b>	150 microns	<b>Ink consumption:</b>	2,000,000 chrs/litre (11mm high)
<b>Print size:</b>	6-12mm (7-dot) or 6-27mm (16-dot)	<b>Printhead dimensions:</b>	70mm diameter x 250mm
<b>Print direction:</b>	Any direction	<b>Shaft encoder:</b>	Optional for variable speed lines
<b>Message storage:</b>	30 messages	<b>Protection rating:</b>	IP54
<b>Message size:</b>	Up to 1,300 characters	<b>Operating temperature:</b>	+5 to +40°C
<b>Graphics:</b>	Editor included with Windows software	<b>Humidity:</b>	Up to 95% non-condensing
<b>Variable data:</b>	Date, time, offset date, serial numbers	<b>Electrical supply:</b>	100-240Vac @ 50-60Hz, 700W
<b>Print speed:</b>	Up to 60m/min depending on message	<b>Compressed air:</b>	6 bar, clean and dry, required for Acetone and MEK inks only
<b>Ink types:</b>	Water, ethanol, acetone and MEK-based		
<b>Ink colours:</b>	Black, white, yellow, dark blue, light blue, green, UV-fluorescing, food-grade blue, food-grade brown.		