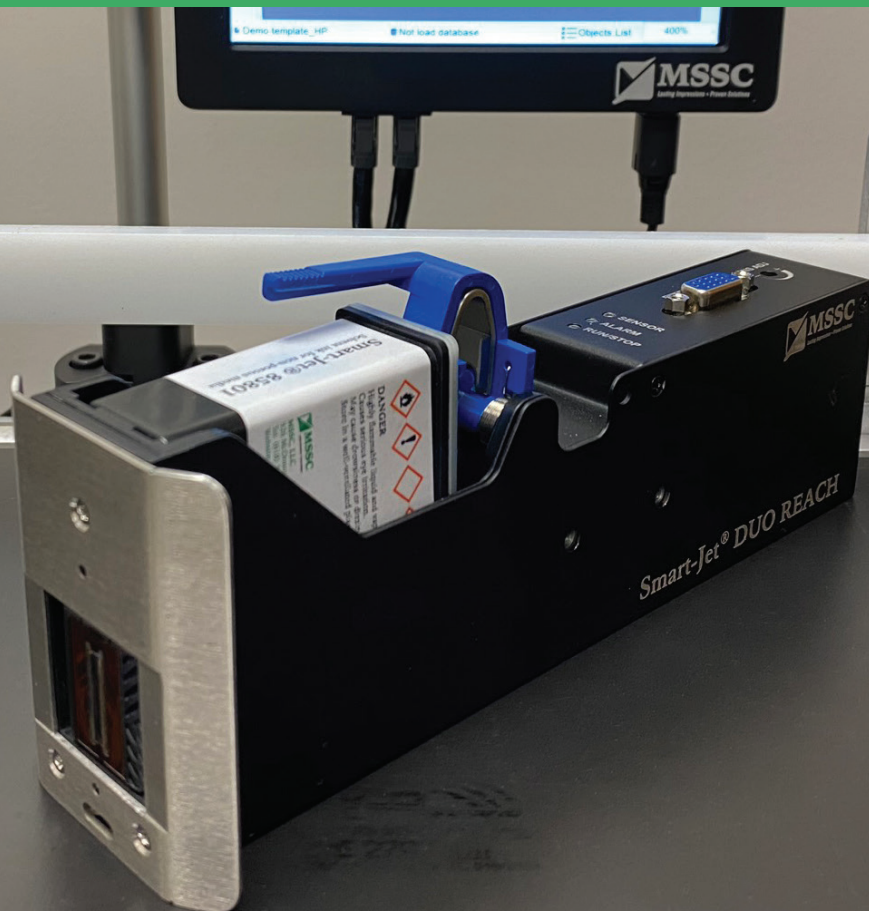


SMART-JET® DUO REACH

PRINTING TWICE AS FAR IS NOW EASILY WITHIN REACH.

Smart-Jet® DUO REACH goes a long way to achieve your most demanding printing requirements

The most unique feature of the Smart-Jet DUO REACH is how it's designed for use with an all new cartridge that can shoot ink up to 2x as far compared to other thermal inkjet cartridges. Plus, since it utilizes the DUO Controller, the REACH gives you the option to use up to two printheads with one DUO Controller. It also uses an MEK based solvent that can print on almost any material you require, even porous and non-porous surfaces. Other benefits include a user-friendly touch screen controller, printing speeds up to 131 ft. (40m)/min at 300dpi, resolutions up to 600dpi and universal UI software. The Smart-Jet® DUO REACH extends beyond what other printing technologies offer.



SMART-JET® DUO REACH

THERMAL INKJET CODER

Features:

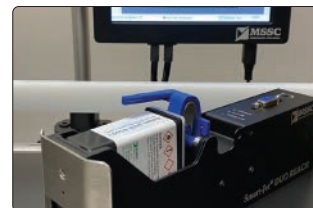
- Text, Counter, Box/Lot, Datetime, Expiry Date, Julian Date, Shiftcode, Image, Database (TXT, CSV, SQL, MySQL, SQLite, JSON)
- Barcodes (Code 11, Code 39, Code 128, EAN, QR, Datamatrix, GS1 Datamatrix)
- POD (Print online data)
- Free design in template up to 2" (50.8mm), 2 head
- Integrate with other devices (PLC, Camera, Checkweigher) via RJ45
- Real-time Printing
- WYSIWYG (What You See Is What You Get)
- Data upload, Backup & Recovery via USB
- Built-in sensor
- External Sensor, Encoder and Alarm beacon available
- Maximum length of template up to 78.74" (2m)
- English (default), German, Vietnamese, Chinese, Korean, and Russian
- Store up to 8GB template on the printer's memory
- Windows true fonts
- Automatic recognition of ink type and ink parameters
- Nozzle warming, auto-jet and self-cleaning capabilities to extend cartridge lifetime
- Nozzle status checking
- Solvent ink for porous and non-porous material
- Support ink color: ●

Specifications:

- **Dimensions:** (L x W x H): Controller 7.6" x 5.1" x 1.4" (193mm x 130.3mm x 34.5mm), Print Head 8.3" x 2.3" x 2.9" (210.4mm x 60.80mm x 74.15mm)
- **Weight:** Controller 2 lbs. (888 grams), Print Head max 1.2 lbs. (540 grams)
- **Display:** 7-inch touch screen
- **Power Supply:** AC 100-240 V, 50/60 Hz, DC 24V 2.5A, Maximum power consumption: 60W
- **Resolutions:** Max 300 x 600 dpi
- **Print speed:** Max 131 ft. (40m)/min @ 300 x 300 dpi
- **Density:** Up to 3 levels of optical density
- **Throw Distance:** Up to 0.4" (10mm)
- **Operating Conditions:** Temperature 41°-122°F (5-50°C) and 90% air humidity, non-condensing



Pieces included in each printhead box



Connect up to 2 printheads at one time



Message on 7" Touchscreen



TIJ 1/2" cartridge technology



Printing on bottom and lid of can